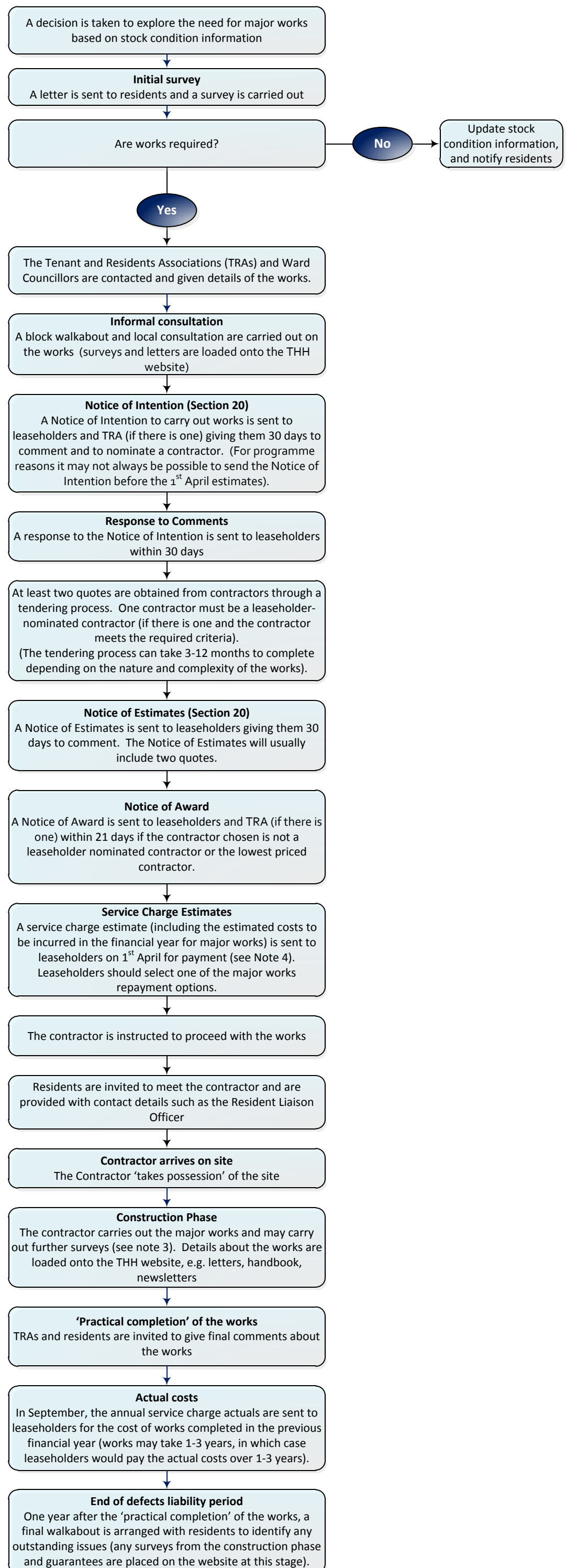


Overview of the Major Works Process for Work not Covered by a Qualifying Long-Term Agreement



Notes:

1. This flowchart is a basic outline of the procedure for guidance only. The process and the order of the tasks may vary depending on the type of works being carried out.
2. A Qualifying Long Term Agreement (QLTA) or framework agreement is an agreement entered into by the landlord with a contractor for a period of more than 12 months. Tower Hamlets Homes uses a QLTA for most major works apart from specialist works. This flowchart shows the process for work that is not covered by the QLTA.
3. During the construction phase, the contractor may have to carry out further detailed surveys such as asbestos, structural and concrete repair surveys, which may change some of the work.
4. In the event that leaseholders have not received a Notice of Intention for a scheme before 1st April, they may receive it during the financial year.
5. The process may change where emergency works are required.